

Howard County Public School System
Elementary School Instrumental Music Assessments

CLARINET – Year Two Test Two

Part I – Performance Assessment – Scales and Rhythms

F Major Scale – Two Octaves

Musical notation for the F Major Scale, two octaves. The first staff shows the ascending scale from F4 to F5. The second staff shows the descending scale from F5 to F4. The key signature has one flat (Bb) and the time signature is common time (C).

Chromatic Scale

Musical notation for the Chromatic Scale. The first staff shows the ascending scale from F4 to F5. The second staff shows the descending scale from F5 to F4. The key signature has one flat (Bb) and the time signature is common time (C). A green annotation "Steady ♩ = 100" is placed above the first staff.

Part II – Performance Assessment – Prepared Piece

Allegro

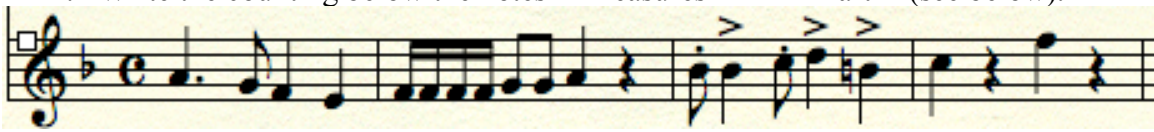
Musical notation for the Prepared Piece. The first staff starts with a dynamic marking of *p* and a crescendo hairpin leading to a dynamic marking of *mp* at measure 4. The second staff starts with a dynamic marking of *mf*, a crescendo hairpin leading to a dynamic marking of *f*, followed by a decrescendo hairpin leading to a dynamic marking of *mp*. The piece is marked "Allegro" and includes a "rit." (ritardando) marking. The key signature has one flat (Bb) and the time signature is common time (C).

*Howard County Public School System
Elementary School Instrumental Music Assessments*

CLARINET – Year Two Test Two

Part III –Rhythm Assessment

1. Write the counting below the notes in measures 1 – 4 in Part II (see below).



2. Count, Clap and Tap the rhythm of measures 1 – 4 in Part II.

Part IV – Theory Assessment

On the lines below, identify the numbered items above.

1. Define _____
2. Kind of note _____
3. Name _____
4. Name _____
5. Name of note _____
6. Name _____
7. Name _____